

Series 92 120 VAC & 220 VAC Explosion Proof Electric Actuator

Standard Features

- **UL1203 Certified (CL.I, DIV. 1&2)**
- **Motor:** Reversing, brushless, capacitor run 120 VAC 50/60 Hz, single phase
- **Overload protection:** Integral thermal overload protection for motor windings with automatic reset
- **Gear train:** Permanently lubricated, solid gear that is Rockwell hardened
- **Corrosion Resistant Enclosure:** Thermally bonded polyester powder coat finish with stainless steel trim
- **ISO mounting configuration (FO7/17 star)**
- **Conduit:** Two ½" FNPT conduit entries to eliminate cross feed between control, feedback, and power signals
- **Position indication:** Highly visible beacon position indicator for positive position of valve, even at a distance
- **Decutchable manual override:** Pull up on indicator knob, insert 5/8" wrench on to flats and rotate in the appropriate direction (CCW for open, CW for close). Models with handwheel override do not require a wrench. Simply push down on handwheel until engaged with cam and rotate
- **Limit switches:** Standard end of travel limit switches can be used for light indication (not to be use with PLC for position confirmation)
- **UL1203 Enclosure:** Combination weather proof & explosion proof (CL.I, Div. 1&2) enclosure for use in various environments
- **Captivated SS hexhead slotted enclosure screws**
- **CE compliant motor:** All 120 VAC and 220 VAC motors are CE compliant stamped as such
- **Extended duty cycles:** Our extended duty cycles are ideal for modulating and high cycling applications
- **Output torque:** Series 92 Electric Actuators have an output torque range from 400 in/lbs to 2000 in/lbs

Options

- Auxiliary limit switches
- Mechanical brake
- DC control relay
- 220 VAC
- Hand wheel manual override
- No manual override
- TYPE 7 breather
- Custom wiring configurations



Engineering Specifications

Size: S92, A92, B92, C92
 Torque: 400-2000 in/lbs
 Voltage: 120 VAC 1Ph 50/60 Hz
 Amp Draw: S92, B92 .5A, A92 .8A, C92 1.0A
 Conduit Entry: Two (2) ½" FNPT
 Max Ambient Temperature: 150° F
 Switches: Two (2) single pole, double throw (2-SPDT) 15 amp rated
 Cycle Time per 90°: S92, A92: 15 seconds
 B92, C92: 32 seconds
 Enclosure: UL1203 CL.I, Div. 1&2

Engineering Data

Model	Torque (in/lbs)	120/1 VAC		220/1 VAC		Cycle Time per 90 Degrees (seconds)*	Weight (lbs)
		Amp Draw	Duty Cycle	Amp Draw	Duty Cycle		
S92	400	0.5	100%	0.4	100%	15	15.3
A92	700	0.8	75%	0.6	75%	15	15.3
B92	1100	0.5	100%	0.4	100%	32	15.3
C92	2000	1.0	50%	0.6	50%	32	18.3

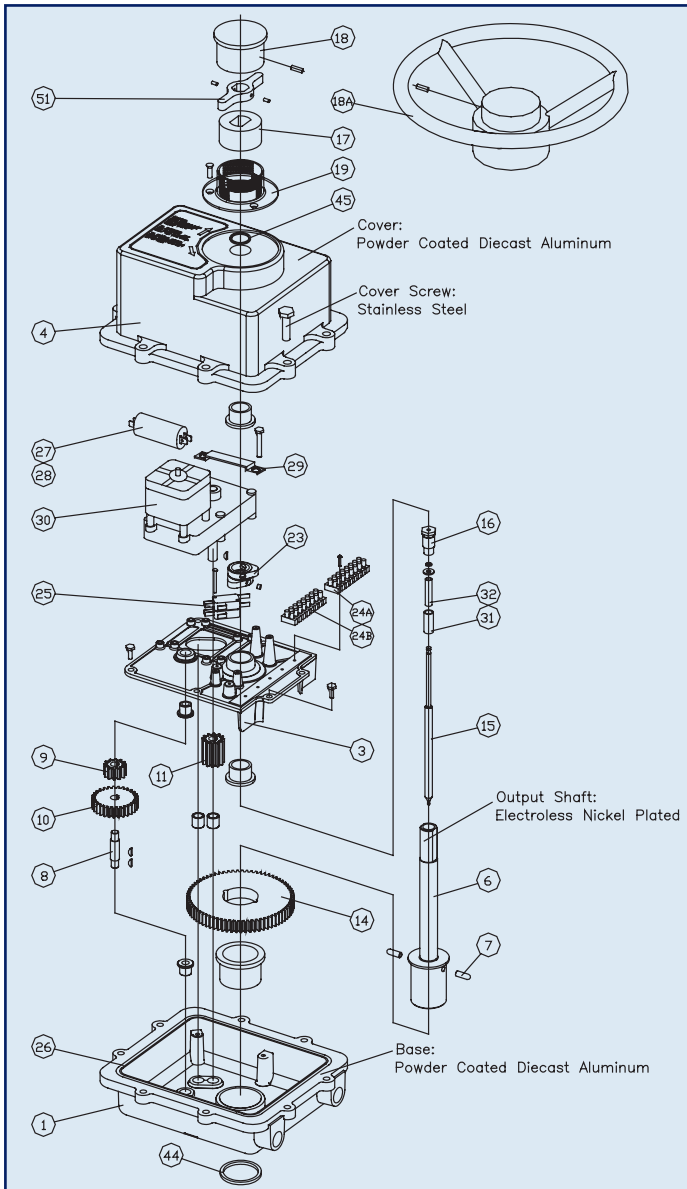
Note: Amp rating is considered locked rotor.

Duty cycles are for ambient temperature (73° F).

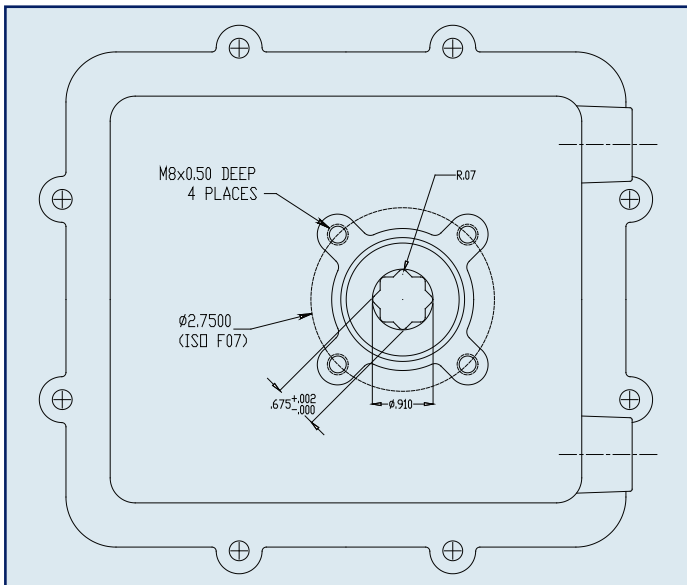
* Cycle times are approximate and will vary depending on load.

Series 92 120 VAC & 220 VAC Explosion Proof Electric Actuator

Parts List



PARTS LIST						
NO.	Part Number	PCS.				Description
		S92	A92	B92	C92	
1	7401920	1	1	1	1	Base
3	7401060	1	1	1	1	Base Plate
4	7401940	1	1	1	1	Cover
6	7401900	1	1	1		Shaft Main
6A	7401905				1	Shaft Main
7	7401360	2	2	2	2	Pin
8	7401280			1	1	Shaft Stub
9	7402003			1	1	Spur Gear B1
10	7402002			1	1	Spur Gear A1
11	7401400	1	1	1	1	Gear Pinion
14	7401380	1	1	1	1	Gear Main
15	7401200	1	1	1		Shaft Inner
15A	7401210				1	Shaft Inner
16	7401180	1	1	1	1	Shaft Retainer
17	7401300	1	1	1	1	Knob Lower
18	7401320	1	1	1		Knob Upper
18A	7401995				1	Handwheel
19	7401260	1	1	1	1	Collar
23	7401480	2	2	2	2	Cam
24A	7401420	1	1	1	1	Terminal Block 1-8
24B	7401425	1	1	1	1	Terminal Block 9-16
25	7401460	2	2	2	2	Switch
26	7401560	1	1	1	1	O-Ring Base/Cover
27	7402948	1		1	1	Capacitor 4.2 mFD
27A	7402004		1			Capacitor 6.7 mFD
28	7403008				1	Capacitor 7.6 mFD
29	7401520	1	1	1	1	Capacitor Bracket
30	7401340	1	1	1	1	120 VAC Motor
31	7401250	1	1	1	1	Shell
32	7401220	1	1	1		Spring
32A	7401230				1	Spring
44	7401040	1	1	1	1	Seal Base
45	7401140	1	1	1	1	Seal Cover
51	7401485				1	Handwheel Cam



Sample Specification

All Series 92 120 VAC & 220 VAC Explosion Proof electric actuators shall be UL1203 Certified for Class I, Division 1 & 2 locations, have a thermally protected, bi-directional (reversing type), capacitor run motor with a permanently lubricated gear train. Motors shall conform to CE and be indicated on motor housing. Actuators shall have solid, heat-treated alloy steel gearing encased in a die cast aluminum enclosure that has a thermally bonded polyester powder coat finish, with stainless steel trim. Actuator enclosure shall conform to weather proof and explosion proof criteria set forth by UL Standard 1203, and bear the UL1203 plaque for CL.I Div. 1 locations. Each actuator shall have a declutchable manual override, visual position indication, and an ISO mounting configuration as manufactured by Asahi/America.